

Commission No. 88

Commission Exhibit No. 875

PROPERTY OF U. S.
SECRET SERVICE

COMMISSION EXHIBIT 875

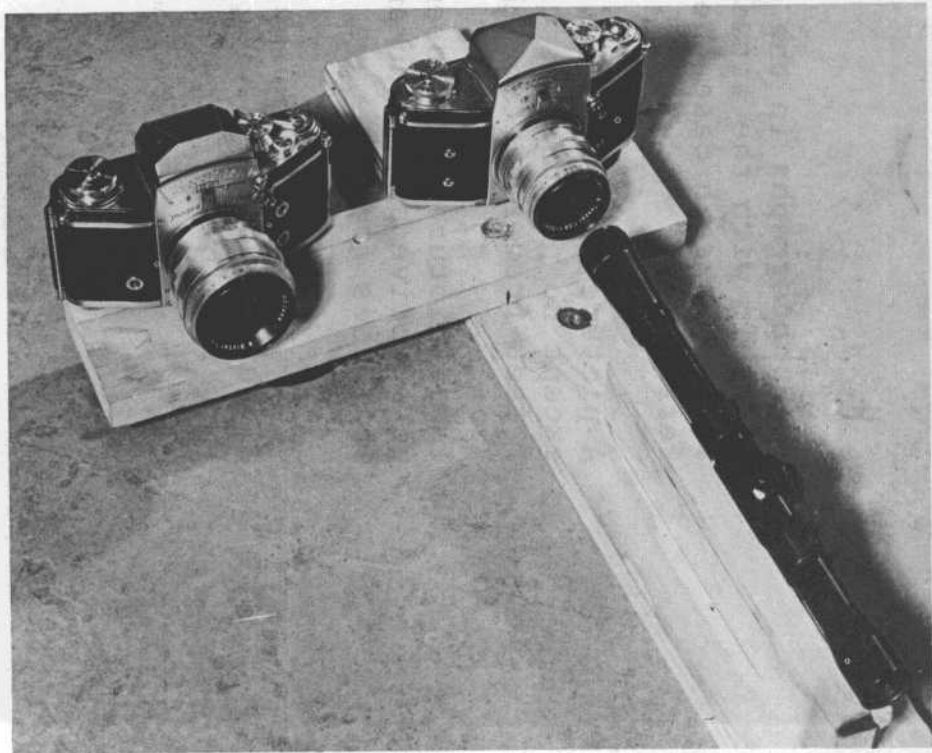
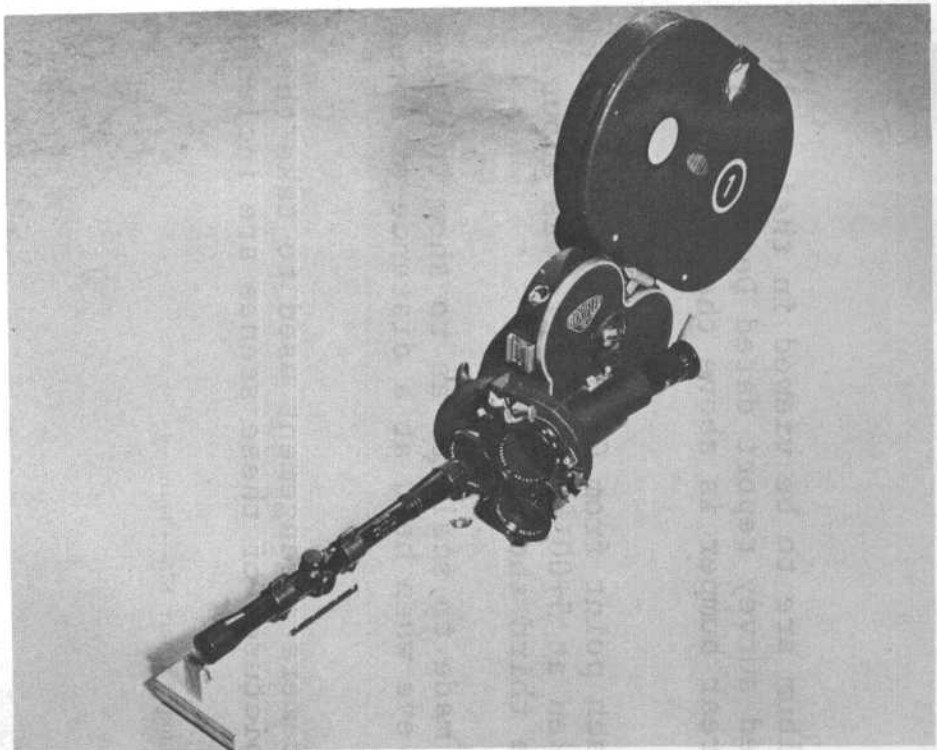
The photographs in the album are to be viewed in their relationship with the attached survey report dated December 5, 1963. In each case the rear bumper is above the point referred to.

A picture was taken at each point from 0+00 to the 6+25 mark, except no picture was taken at 5+00 mark as this was about 4 feet from impact of the third shot.

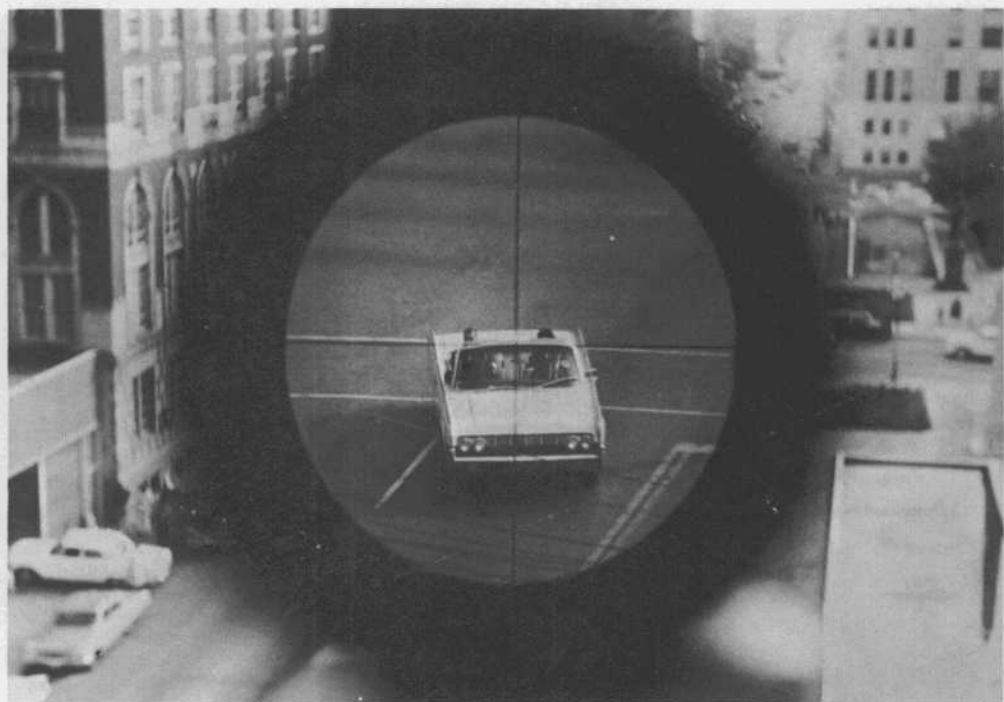
These pictures have been made to scale so as to show the same perspective as the human eye when held at a distance of about 16 inches from the eye.

Photographs showing the camera arrangement used to take the pictures and the moving pictures of these scenes are included in this album.

COMMISSION EXHIBIT 875—Continued



COMMISSION EXHIBIT 875—Continued



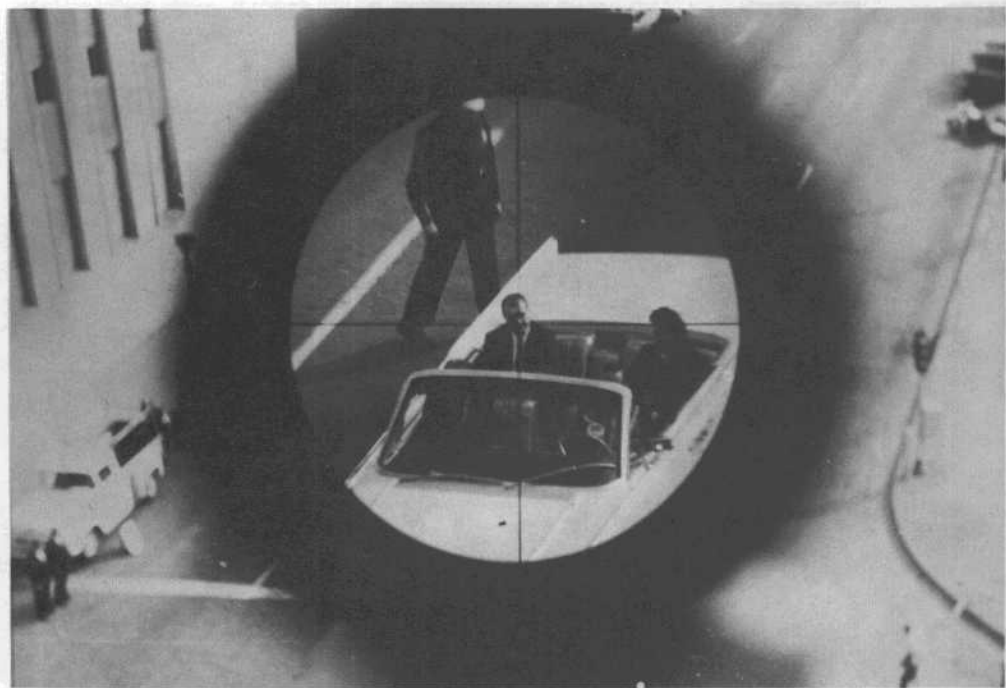
COMMISSION EXHIBIT 875—Continued



COMMISSION EXHIBIT 875—Continued



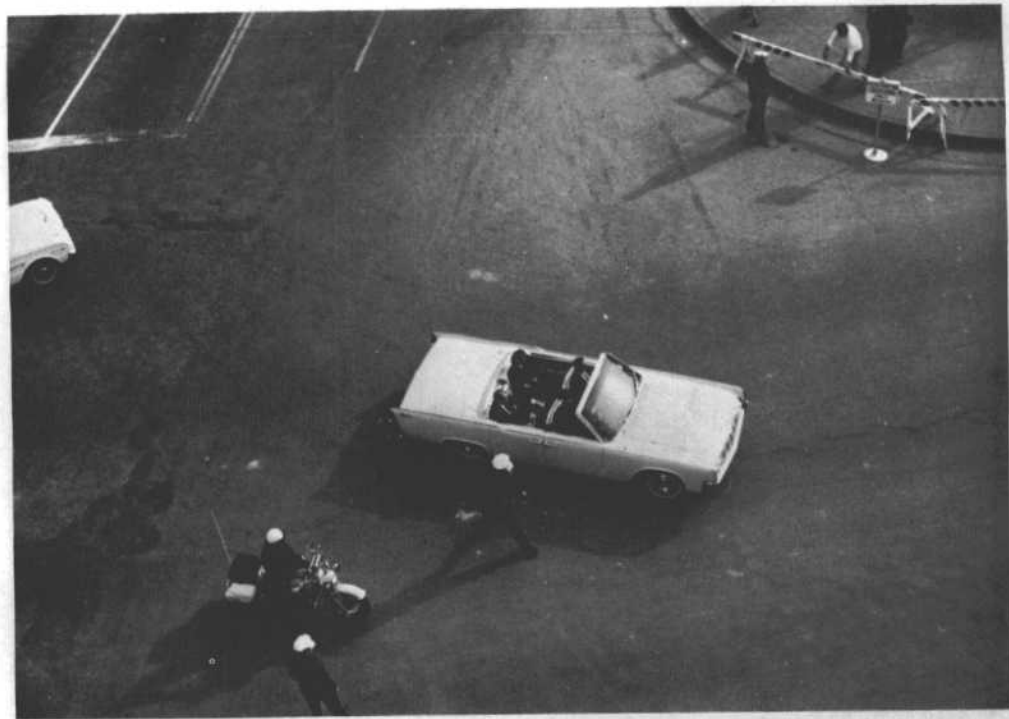
COMMISSION EXHIBIT 875—Continued



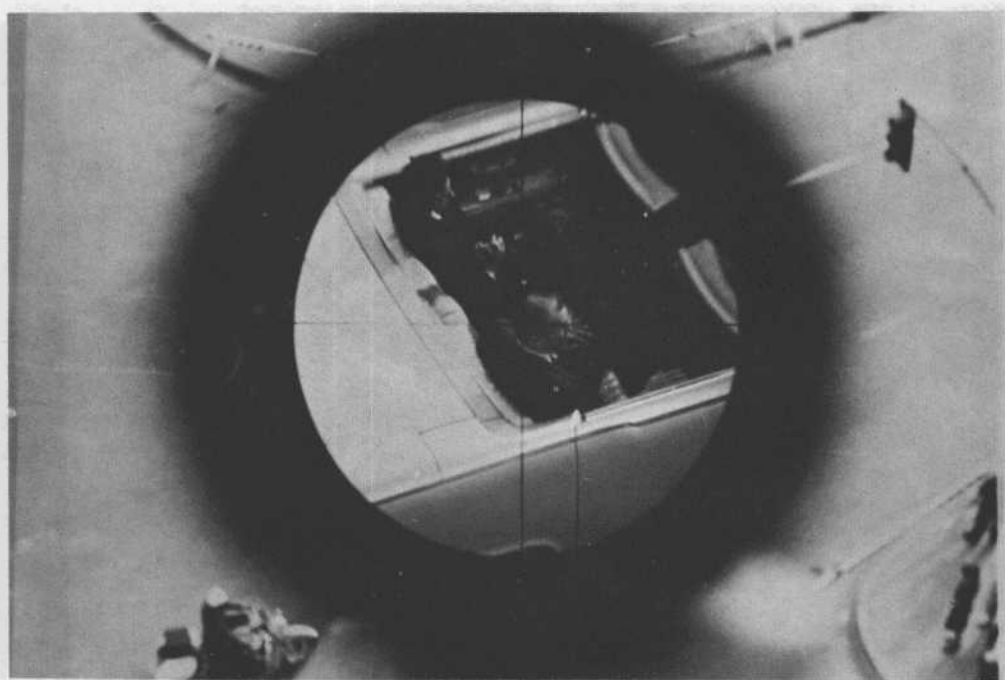
COMMISSION EXHIBIT 875—Continued



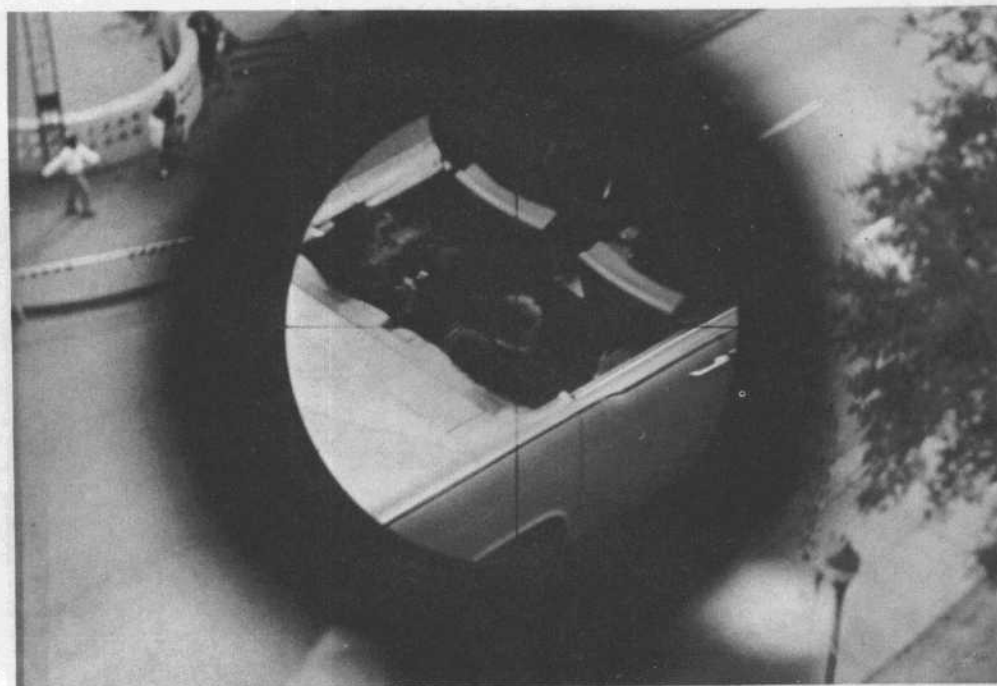
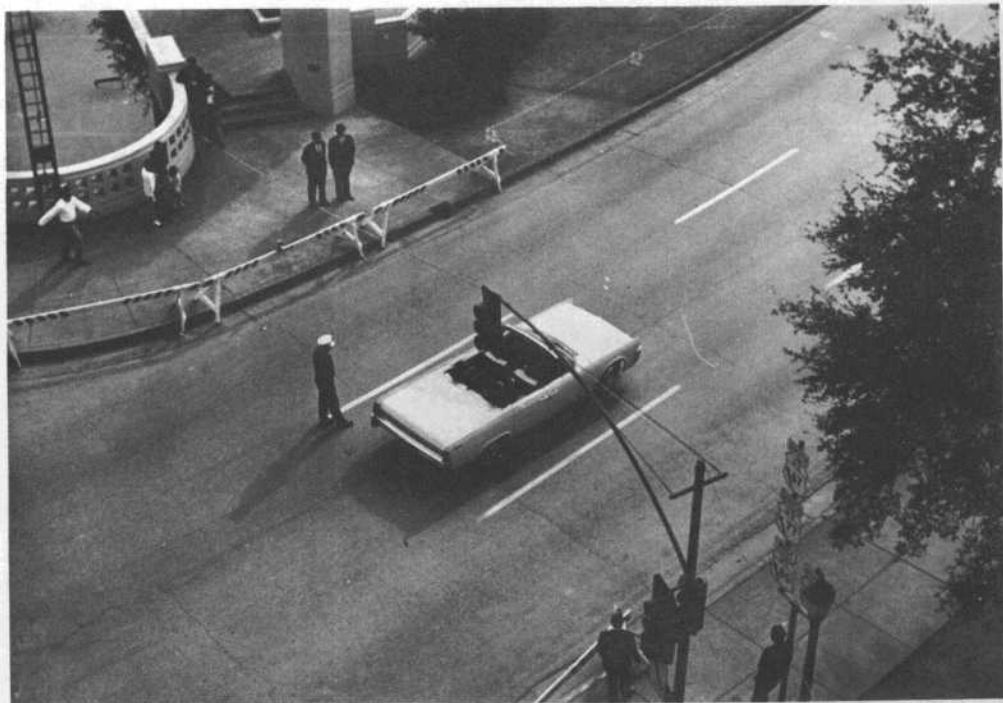
COMMISSION EXHIBIT 875—Continued



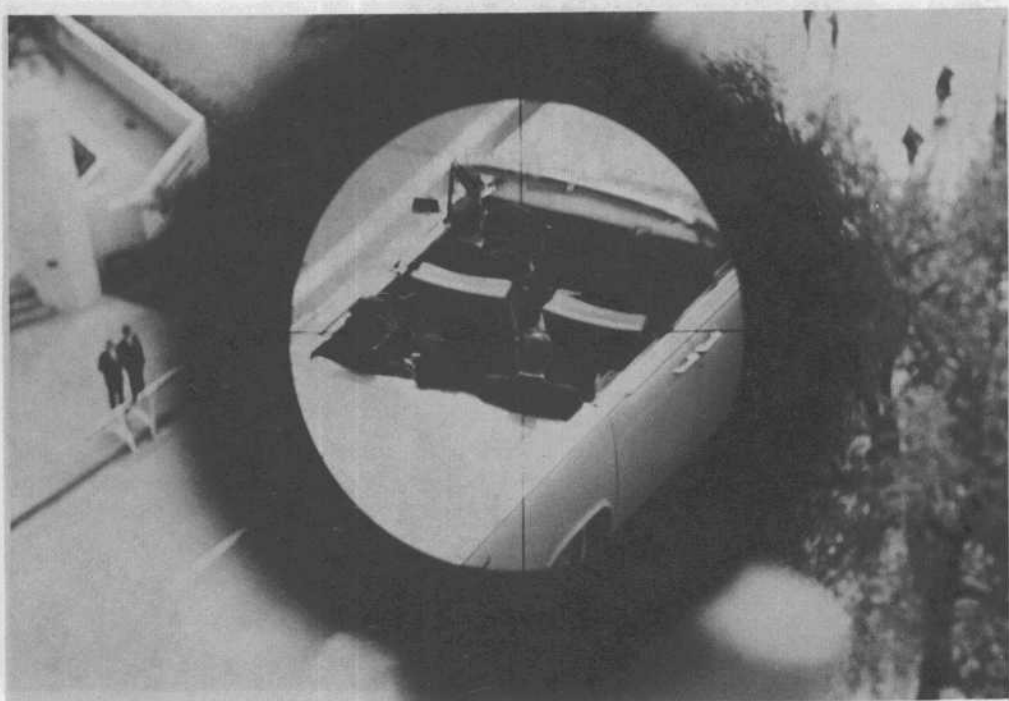
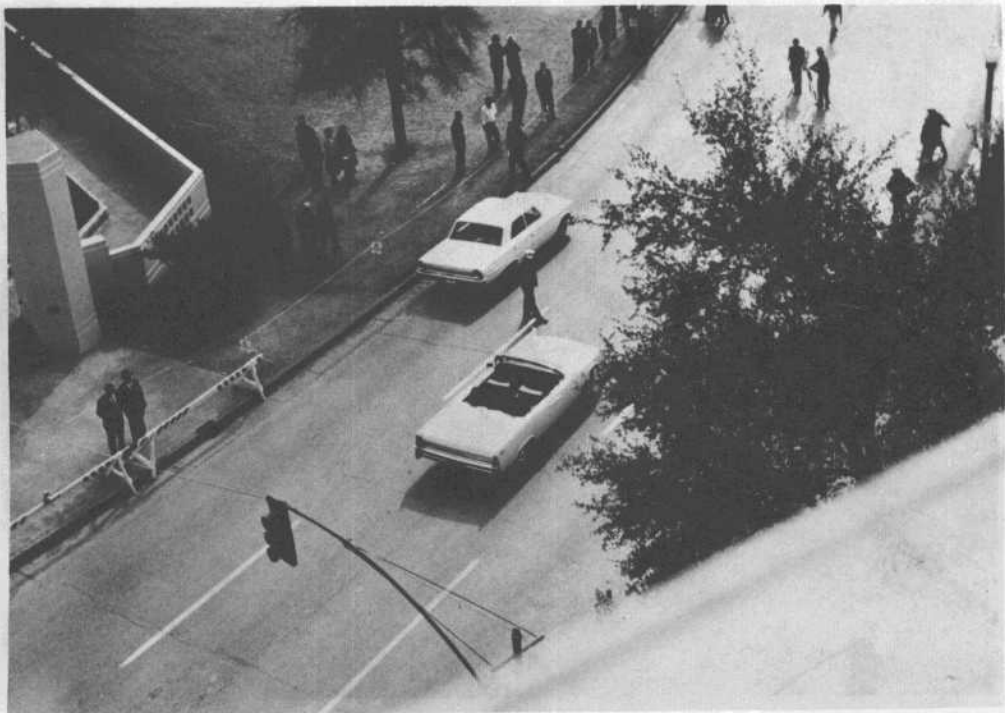
COMMISSION EXHIBIT 875—Continued



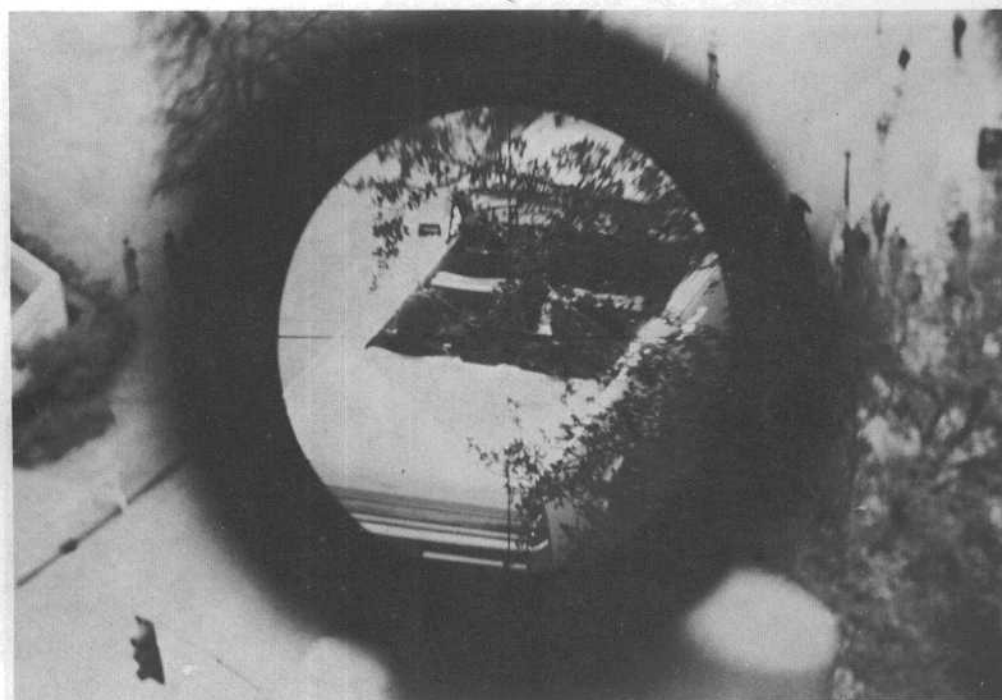
COMMISSION EXHIBIT 875—Continued



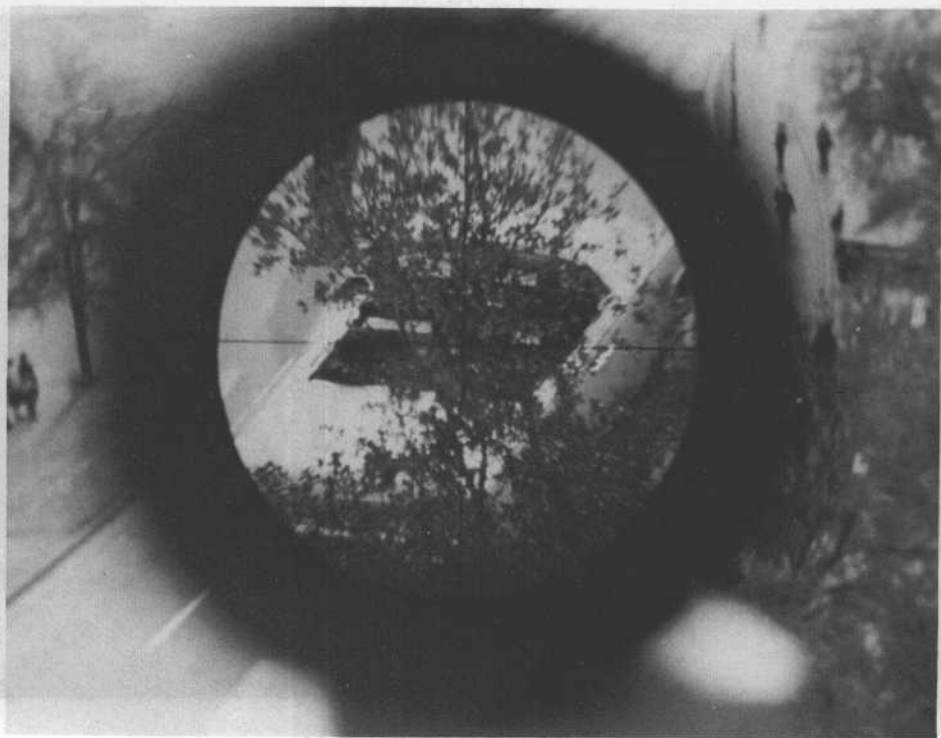
COMMISSION EXHIBIT 875—Continued



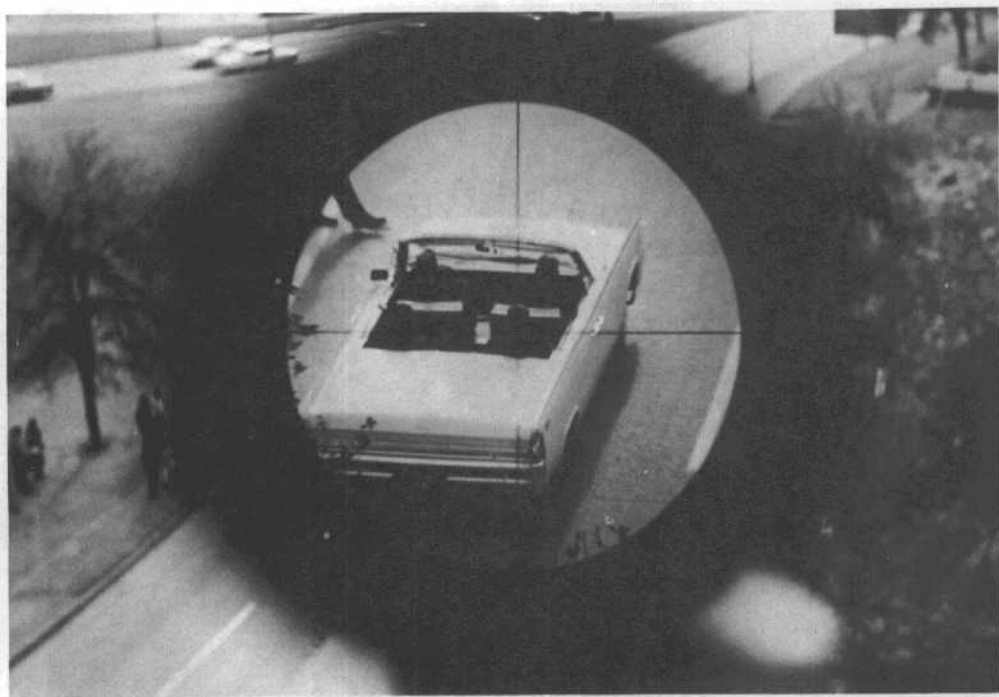
COMMISSION EXHIBIT 875—Continued



COMMISSION EXHIBIT 875—Continued



COMMISSION EXHIBIT 875—Continued

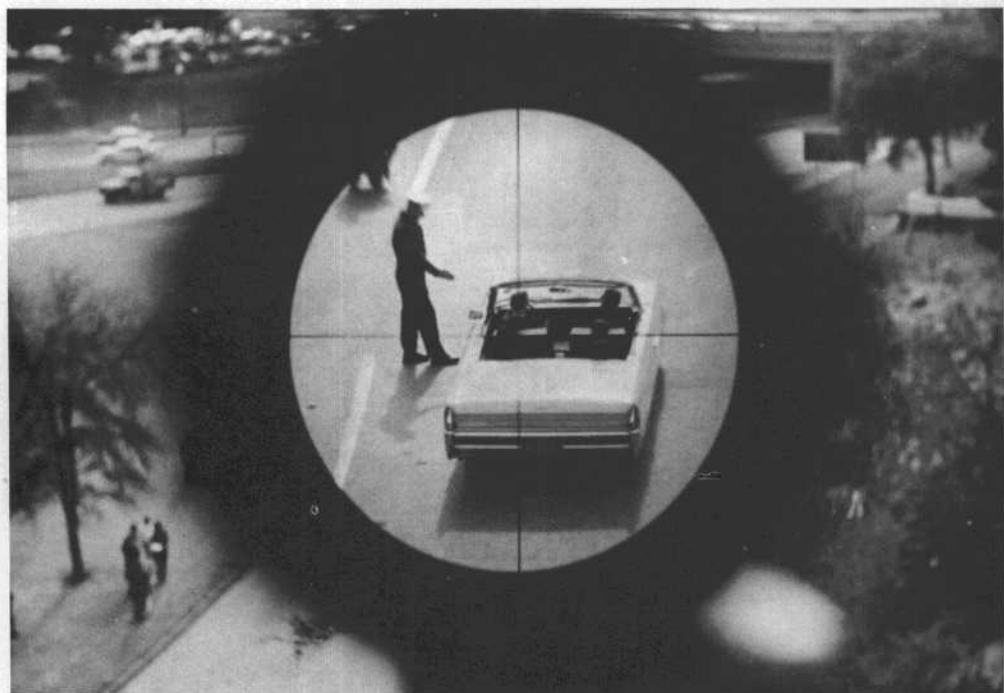


COMMISSION EXHIBIT 875—Continued

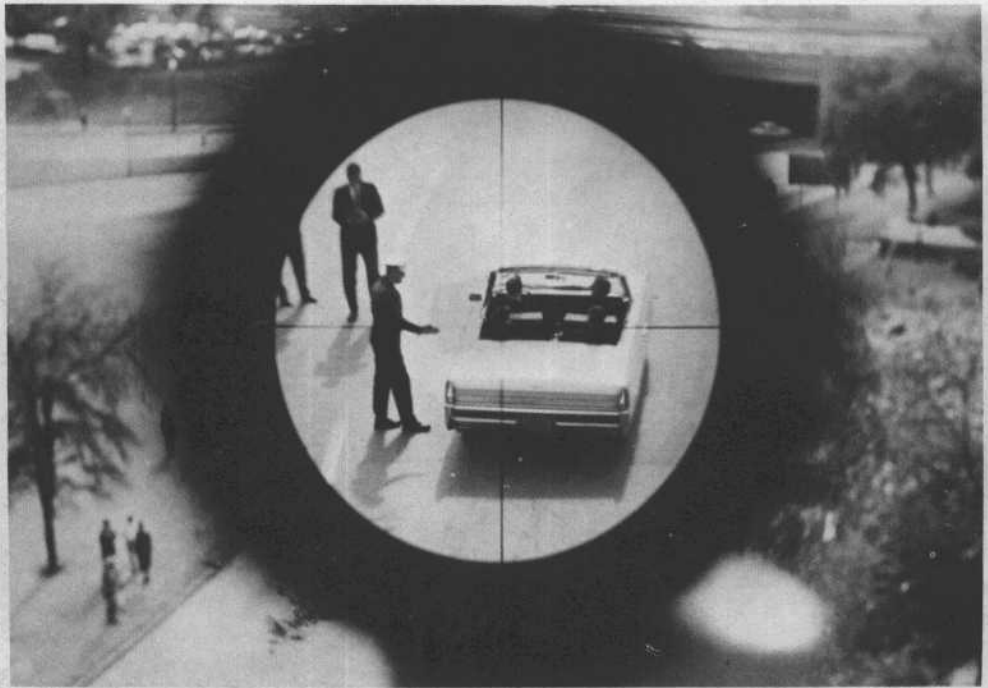
MIAMI POLICE DEPARTMENT



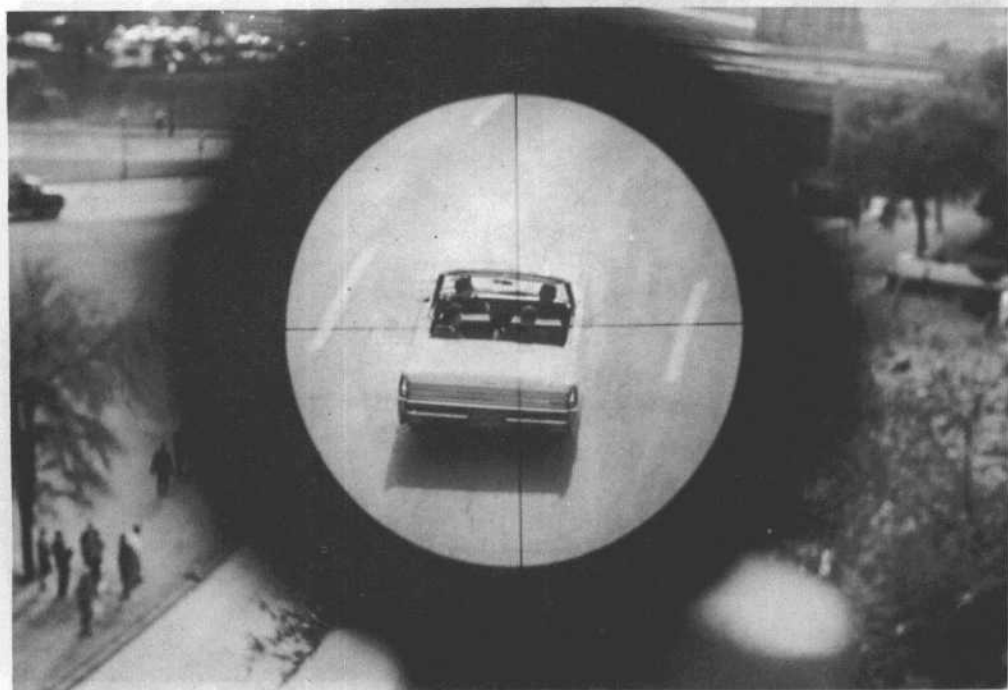
COMMISSION EXHIBIT 875—Continued



COMMISSION EXHIBIT 875—Continued



COMMISSION EXHIBIT 875—Continued



COMMISSION EXHIBIT 875—Continued



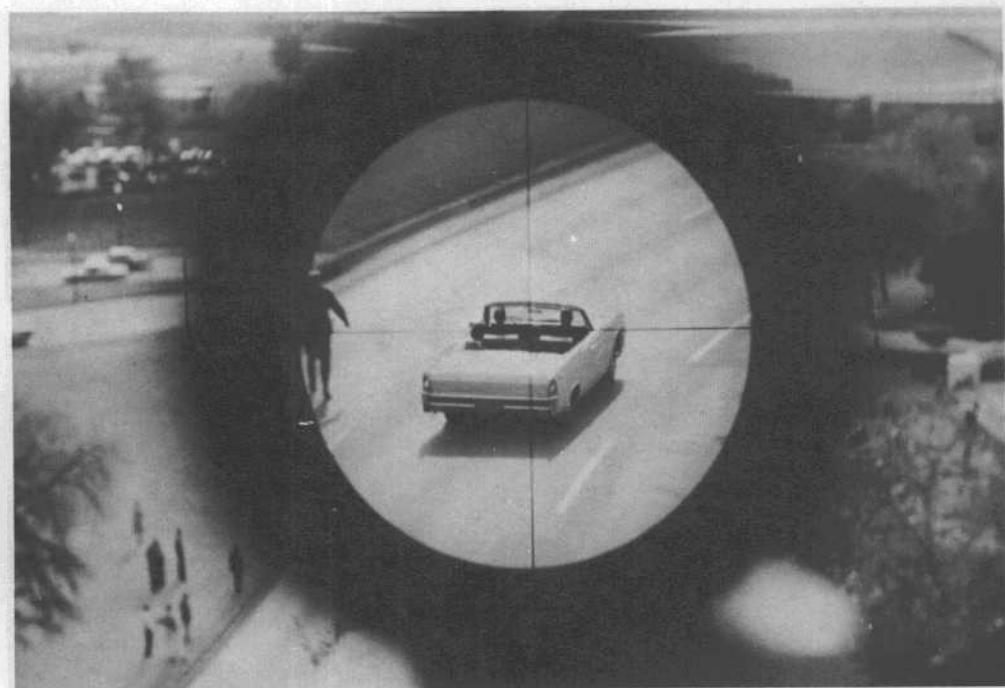
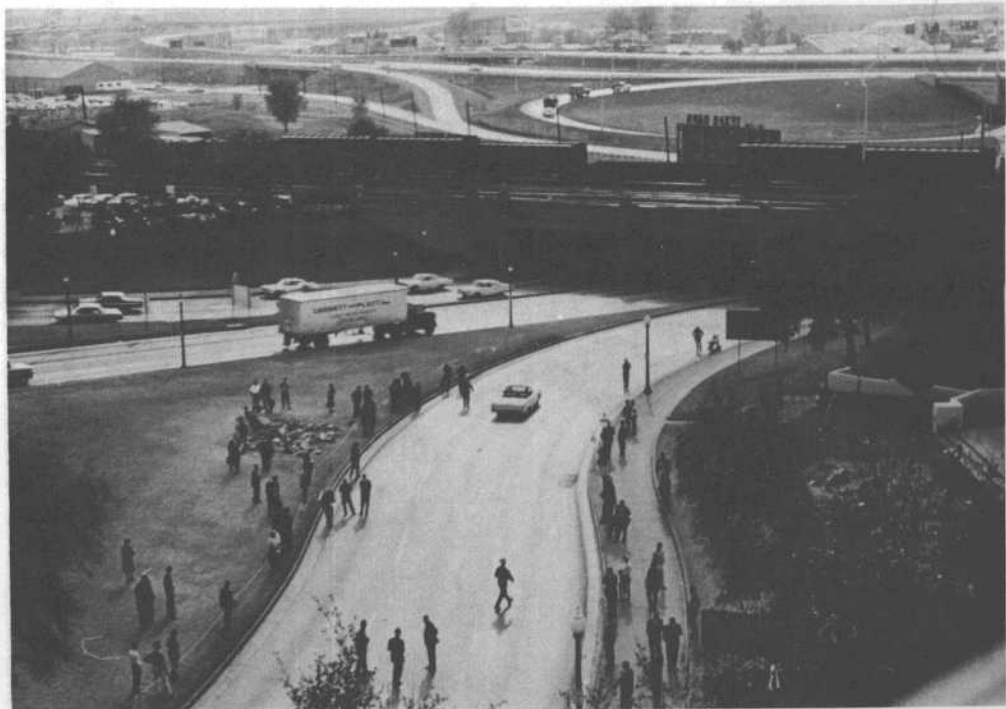
· COMMISSION EXHIBIT 875—Continued



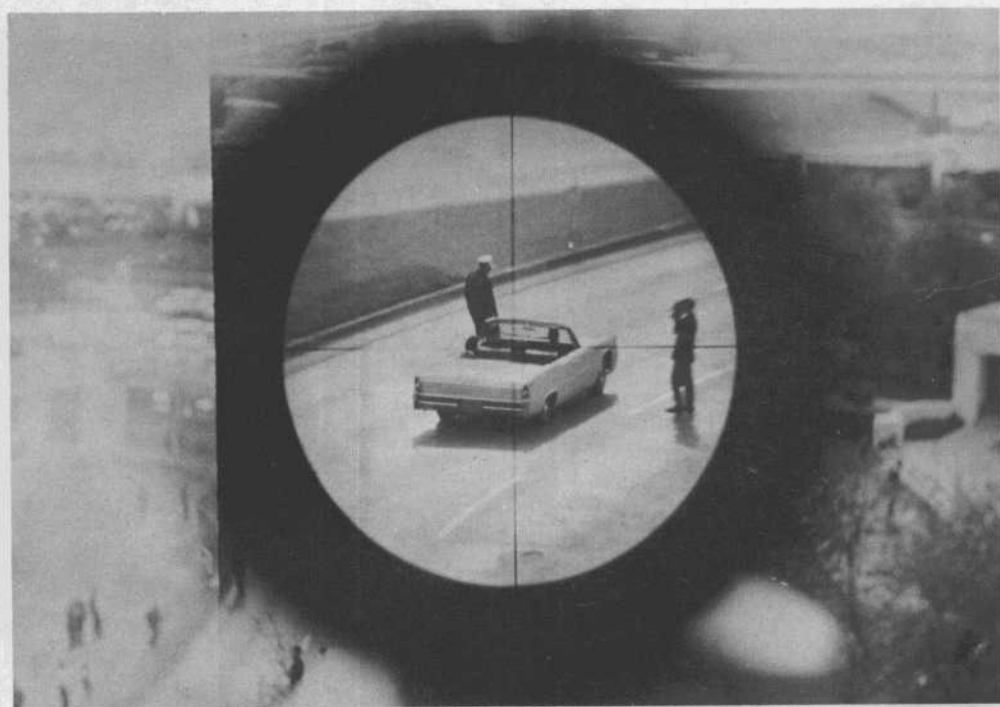
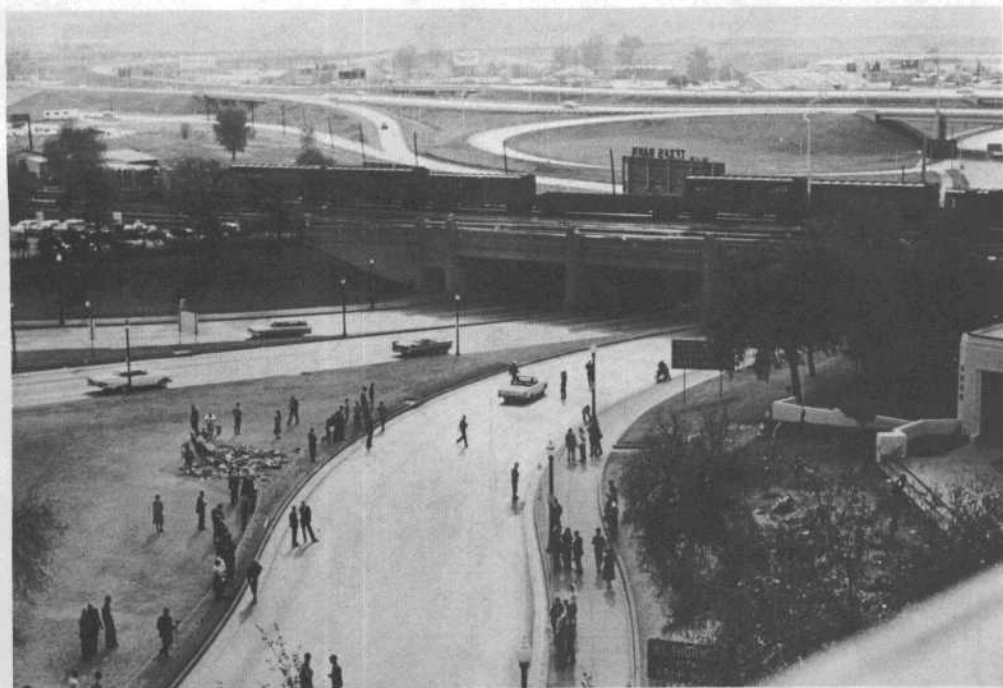
COMMISSION EXHIBIT 875—Continued



COMMISSION EXHIBIT 875—Continued



COMMISSION EXHIBIT 875—Continued



COMMISSION EXHIBIT 875—Continued



COMMISSION EXHIBIT 875—Continued



COMMISSION EXHIBIT 875—Continued